

Injection Date : Tue, 3. Oct. 2023
Seq Line : 8
Location : 58
Inj. Vol. : 2 µl

Acq. Method : C:\Users\Public\Documents\ChemStation\1\Data\SE03OCT 2023-10-03
09-25-28\22010446C LCMS-6#.M

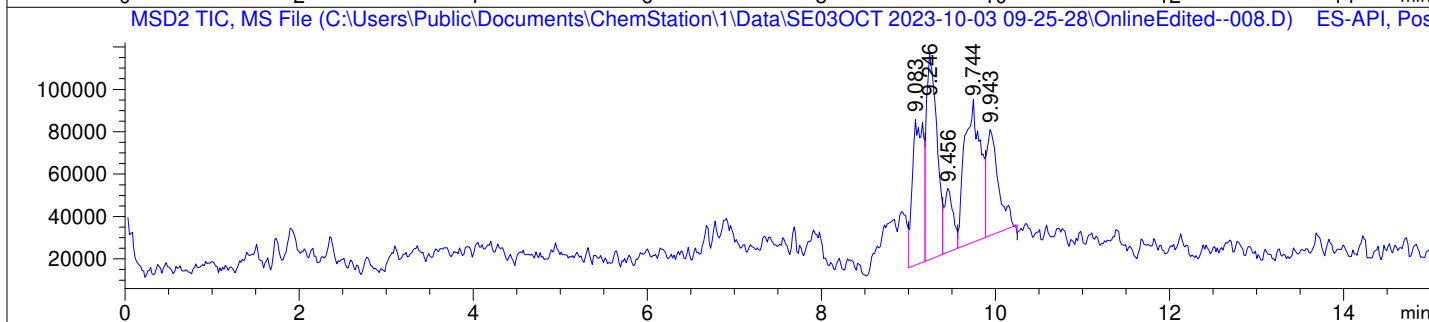
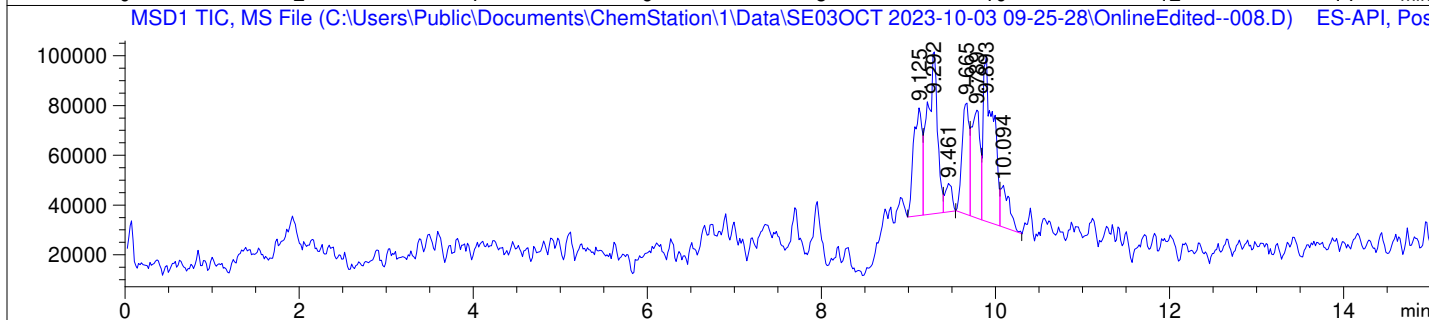
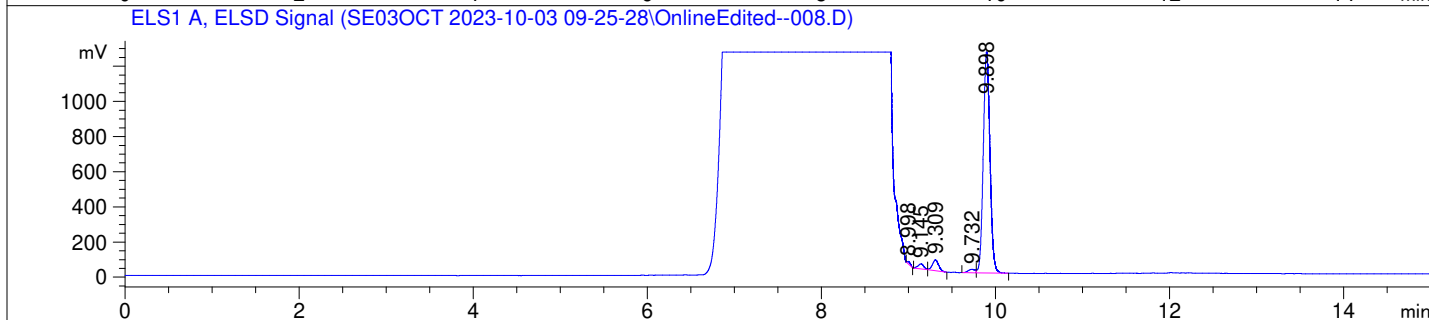
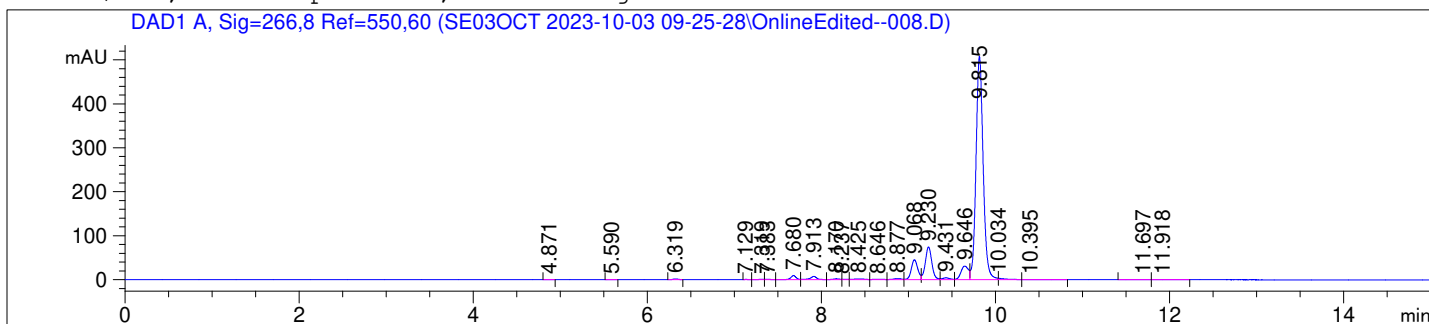
Analysis Method : C:\Users\Public\Documents\ChemStation\1\Data\SE03OCT 2023-10-03
09-25-28\22010446C LCMS-6#.M (Sequence Method)

Waters XBridge BEH Amide (4.6 x 150 mm, 2.5 µm); PN# 186006726

Mobile Phase A: 20mM Ammonium Acetate (aq) pH 8.2

Mobile Phase B: AcN

Mobile Phase A / Mobile Phase B: 5/95 (0 min) --> (10 min) --> 60/40 (5 min); Flow:
1.0 ml/min; MSD1 = positive; MSD2 = negative



DAD1 A, Sig=266,8 Ref=550,60

Peak #	Ret. Time [min]	Area [mV *s]	Area %
1	4.871	1.057	0.027
2	5.590	0.710	0.018
3	6.319	5.592	0.143
4	7.129	1.593	0.041
5	7.319	3.433	0.088
6	7.383	3.520	0.090
7	7.680	40.917	1.044
8	7.913	40.345	1.030
9	8.170	11.218	0.286
10	8.237	3.400	0.087
11	8.425	16.495	0.421
12	8.646	9.475	0.242
13	8.877	17.012	0.434
14	9.068	235.553	6.011
15	9.230	387.654	9.892
16	9.431	25.928	0.662
17	9.646	186.195	4.751
18	9.815	2900.261	74.007
19	10.034	19.735	0.504
20	10.395	6.416	0.164
21	11.697	1.206	0.031
22	11.918	1.211	0.031

ELS1 A, ELSD Signal

Peak #	Ret. Time [min]	Area [mV *s]	Area %
1	8.998	34.149	0.467
2	9.145	133.482	1.826
3	9.309	304.879	4.170
4	9.732	111.159	1.520
5	9.898	6728.341	92.018

